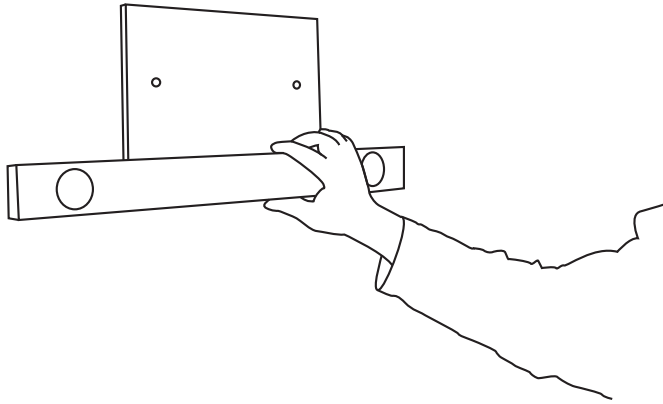


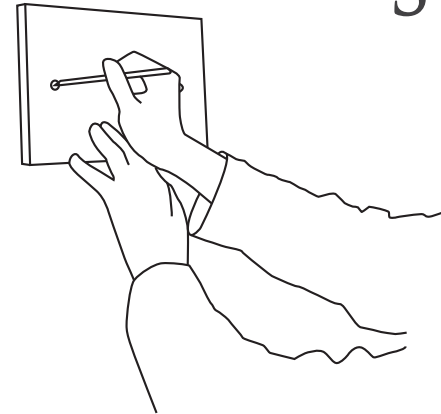
FITTING INSTRUCTIONS - DRILL HOLE PLAQUES



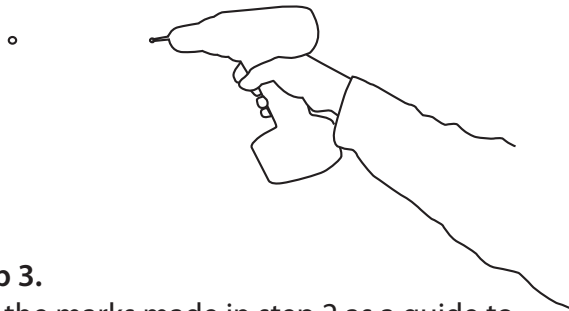
STONE SIGN[®]
COMPANY



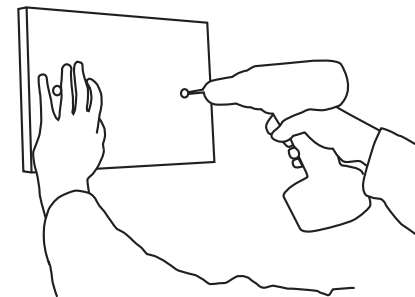
Step 1.
Decide on the placement of your stone sign.
When you are happy, use a spirit level to ensure it is level



Step 2.
Mark the drill holes using a pencil/pen or bradall



Step 3.
Use the marks made in step 2 as a guide to drill 2 pilot holes - If using wall plugs drill larger holes then insert the wall plugs



Step 4.
Secure the plaque to the wall with the supplied screws, using a screwdriver or carefully using a drill driver. Finish off the plaque by adding the screw caps

Tools required:

Handheld drill (cordless or 240v) • Spirit level • Bradall/Pen/Pencil • 3.5 mm drill bit • Screw driver • Stainless steel screws (supplied) • Screw Caps (supplied)